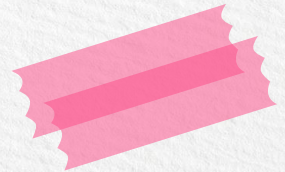
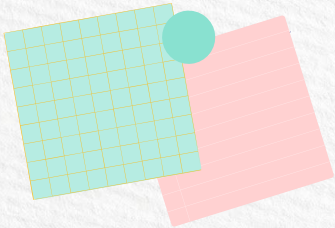


Bella Vista Middle School & Frank Augustus Middle School



Our RAMP Journey!



Agenda

- **Introductions: Description of school & population**
- **FAMMS ANMRC Journey**
- **Program Highlights & Transformations**
- **BVMS Road to a Comprehensive School Counseling Program**
- **Questions**



Bella Vista Middle School




- Approximately 1,350 student
- 2 School Counselors
- 1 LCAP Counselor
- 30% Free or Reduced Lunch



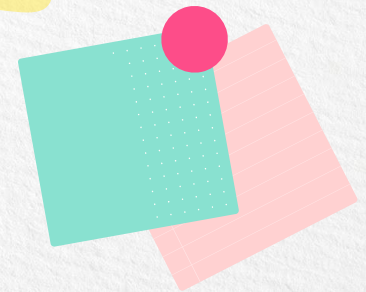
Frank Augustus Miller Middle School

- Approximately 1,000 student
- 2 School Counselors
- Part-time SAP Counselor
- 3 School Counseling Interns
- 52% Free or Reduced Lunch





Beginning the
Journey RCOE
Model Ready Camp



Model Ready Camp Year 1



- Understanding the ASCA model and developing pieces for your program
- Beginning to understand data points, collection, and creating goals.
- Lots of information, but also guided work time to implement new learning.

There is some homework, but it's manageable and benefits your program

Model Ready Camp Year 2

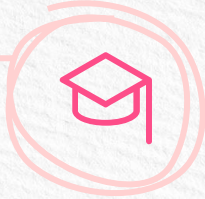
positive mind.
positive vibes.
positive life.

- Taken step by step through the sections in the application.
- Scaffolded process. Finalizing what was worked on in Year 1.
- More individualized and based on need.
- Receiving feedback from RAMP evaluators.

FAMMS Highlights

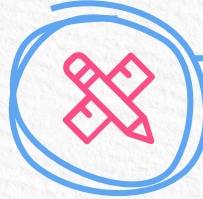
Data Informed

Needs Assessments, risk assessments, grades



Advisory Council

Meet and get input from admin, students, parents, community



Calendaring


Put it on the calendar and just do it!



Tier 1

Social/Emotional Classroom lessons





Data
Informed

Use Data to drive your program

Risk Assessment Numbers

100+ Risk Assessments in 2018
50 Risk Assessments in 2019
43 Risk Assessment in 2020
25 so far this year

Attendance

Examining the 2019-2020 semester 1 data we discovered that of the 51 students chronically absent, as defined by 10 or more absences, 46 students identified white and hispanic. Thus, 90% of our chronically absent students identified white or hispanic.

Needs Assessment

Student Needs Assessment
Parent Needs Assessment
Teacher Needs Assessment

Discipline

Grades

Out of 6,180 grades given (6 grades per students and 1,030 students) 530 F grades were received at the first or second semester last school year(2018-2019). With 6,180 total grades given and 530 F's, the data showed 9% of all grades given were F's .



Calendaring



Calendar everything before the year starts



Weekly activities

Sun	Mon	Tue	Wed	Thu	Fri	Sat
		1	2	3	4	5
6	7	8	9	10	11	12
13	14	15	16	17	18	19
20	21	22	23	24	25	26
27	28	29	30	31		



Daily activities

09:00

Emailed departments for Tier 1 sign ups

10:00

11:00

12:00

If it's on the calendar you make it happen

13:00

14:00

15:00

Communicate with others that you will be unavailable and who to reach out to

16:00

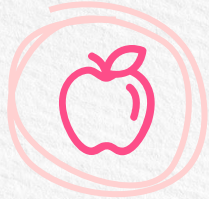
17:00



Advisory
Council

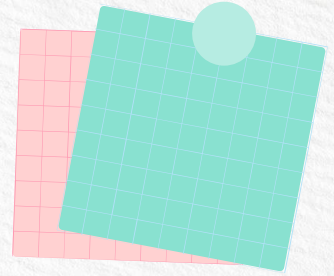


Advisory Council



Calendar it!

Plan the Fall and Spring Meeting and get invites out to members



Community Member


This was most challenging for us



Agenda

Presenting your program and getting buy in from the members.





Tier 1
Lessons

Tier I Lessons



Wellness Fair



Conflict Resolution



Anti-Bullying



Academic



Registration

Incoming 7th grade

Incoming 8th grade

Road to RAMP

Beginning
of Journey

**RCOE Model
Ready Camp
(2018-19)**

Looking for a change from reactive to proactive. Wanting to create data driven school counseling plan.

Work on
Goals

**Complete
Homework
(2018-19)**

RCOE MRC
Scaffolded work to
make it
manageable.

Make it
Happen

**Implement
Plan
(2019-20)**

Use the data and
implement Tier 1,
2, and 3 lessons

Complete
Journey

**Complete
RAMP
Application
(October 2020)**

All of the work is done.
Complete the application with all of
the information that was gathered.

Our journey from reactive to proactive





Have you ever felt...

Like the cloud of darkness follows you around when you are constantly reacting to the immediate needs of everyone else's emergency?



We did too!

**Our journey to build a Comprehensive
Counseling Program began....**

One Step at a Time...



01

Desire for change

02

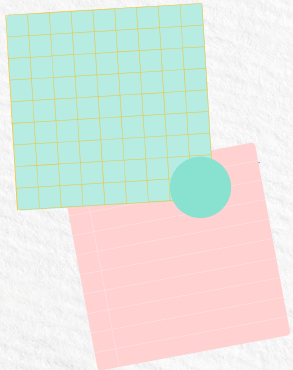
Branding Ourselves

03

Teach Lessons

04

Small Groups



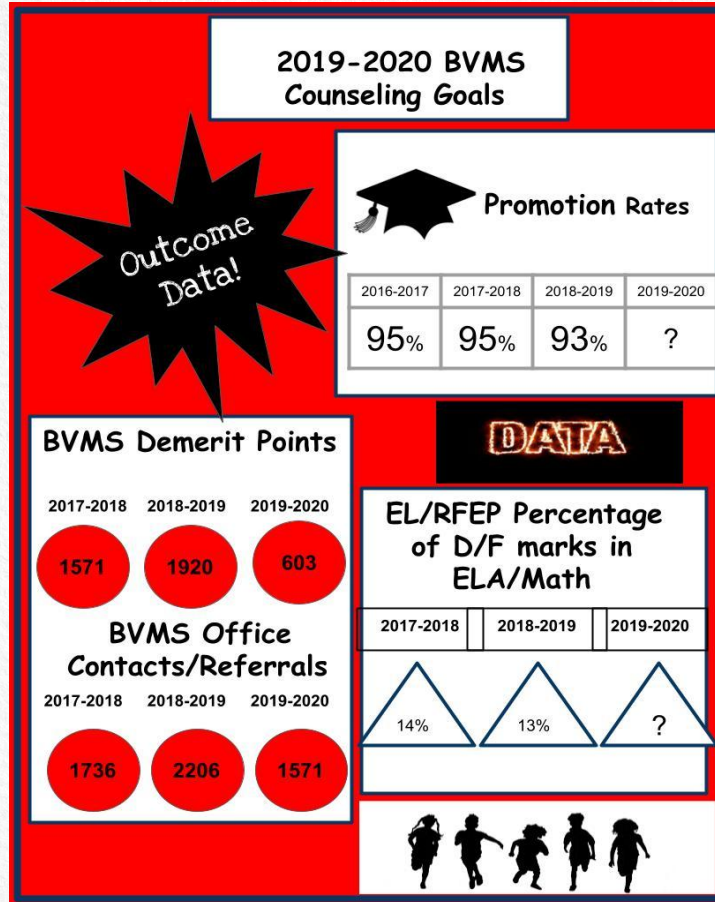


01

Desire for change....
Attended the Counseling
Leadership Network...



We analyzed data...





02

We branded ourselves...
YouTube, Principal's
Administrative
Conference, Advisory
Council

Noted.

**BVMS
Counseling
Crew!**

**Our YouTube
Journey & Video
Compilation**

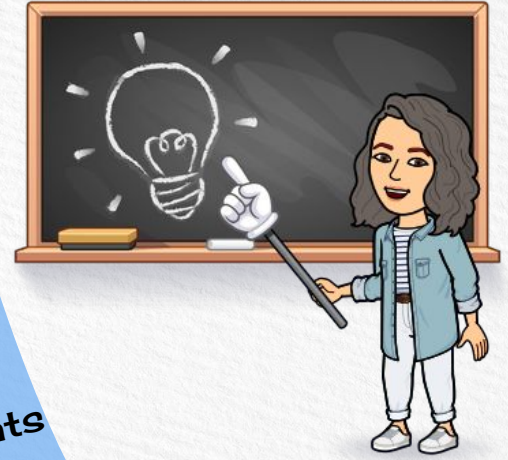




03

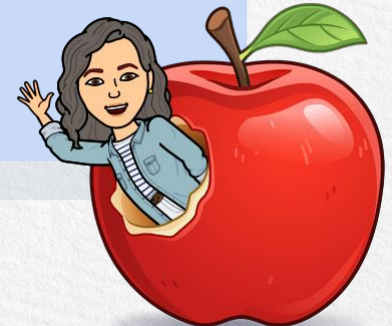
Tier I Classroom Lessons

We started the process with lessons that we thought students would benefit from.... Then we evolved our lessons to be driven from the data that we gathered!




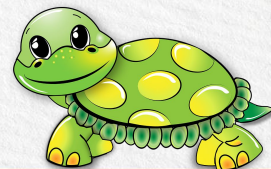
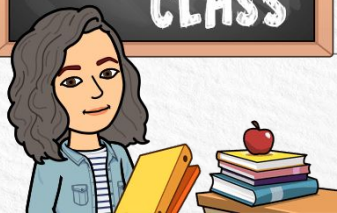
Benefits of tier I level counseling lessons

- Key component in a comprehensive counseling program.
- Provides a service for ALL students.
- Provides common vocabulary that can be referenced in individual/small group counseling services.
- Develops relationships with all students.
- Helps transform your program from reactive to proactive.
- It's FUN!

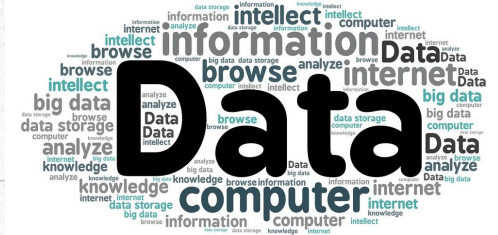


Tier 1 Level Lessons

Domain/Grade	6th	7th	8th
Academic	<p><u>Keys to Success</u> (Data-Increase in # of students able to access their grades online[Google Form])</p>		<p><u>Your Future Starts Now</u> (Data-Pre/Post [Kahoot] calculating a GPA)</p> <p><u>High School Course Selection/College Exploration</u></p>
Career	<p>CCGI (California College Guidance Initiative) [Data-Reports from CCGI]</p>	<p>CCGI/Ca Career Zone [Data-Reports from CCGI]</p>	<p>CCGI [Data-Reports from CCGI]</p>
Social/Emotional		<p><u>Your Tribe Is Your Vibe</u> [Driven from data collected from student needs assessment results]</p>	<p>Your Tribe Is Your Vibe</p>



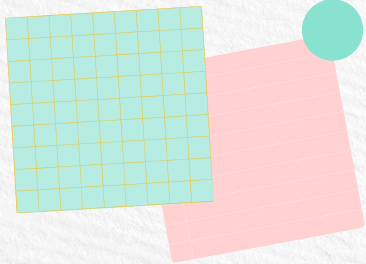
Tier 1 Level Lessons-Data



Total Students in the lesson:	429		
Your Future Starts Now-Pre/Post Results			
	Pre % Correct	Post % Correct	% Increase
Q1 (Calculate a GPA)	26	93	67
Q2 (What GPA do you need in order to participate in the 8th Grade Promotion Ceremony?)	48	92	44
Q3 (True or False: A-G Requirements are the requirements to graduate high school.)	26	72	46
Q4 (What is different in high school classes compared to middle school?)	76	98	22

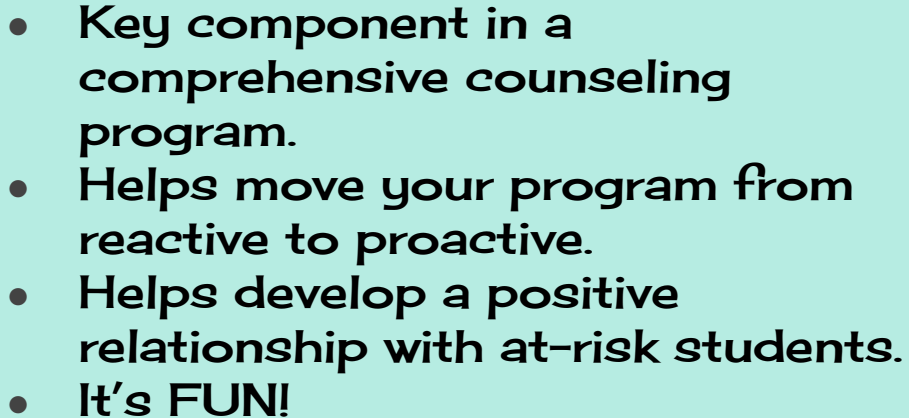


04
Small groups



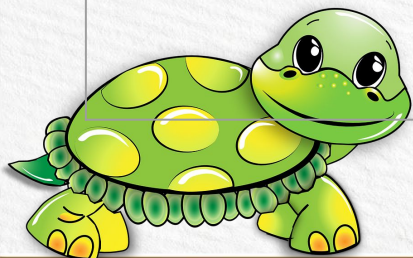
Benefits of tier 2 level small groups



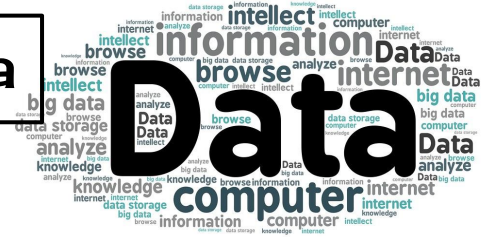
- 
- A large blue sticky note graphic with a light teal body, pinned to the top with a red pin on the left and a yellow-green pin on the right. A pink sticky note is also pinned to the top right corner.
- Key component in a comprehensive counseling program.
 - Helps move your program from reactive to proactive.
 - Helps develop a positive relationship with at-risk students.
 - It's FUN!

Tier 2 Level Groups

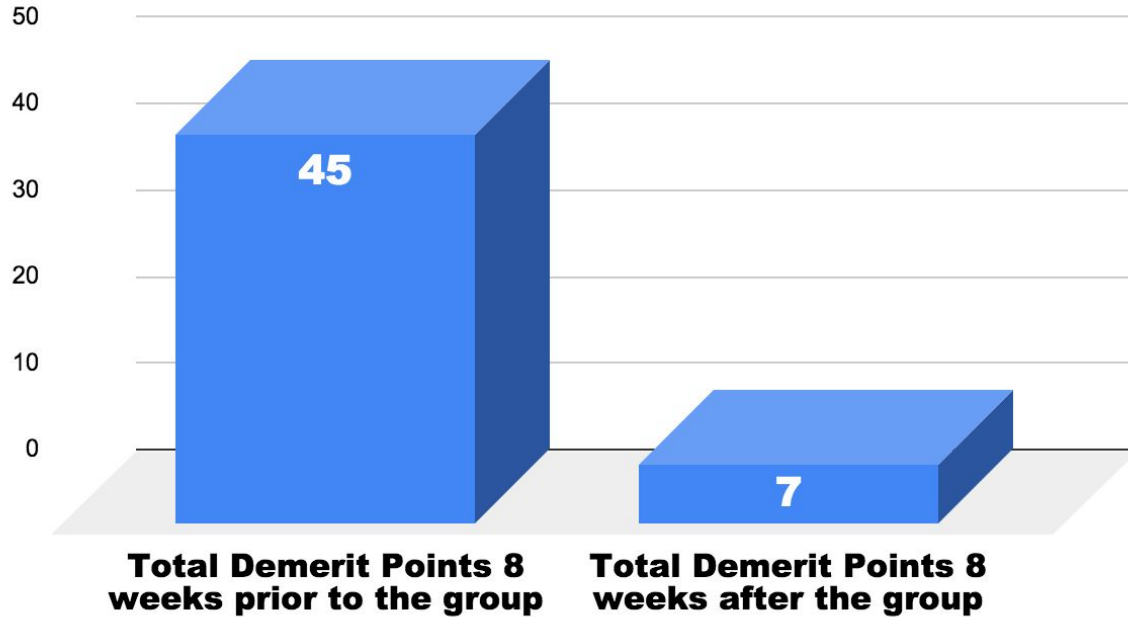
Domain/Grade	6th	7th	8th
Academic	<u>Heart to Heart</u>	<u>Heart to Heart</u>	<u>Final Push</u>
Behavior		<u>Building Champions</u> <u>Star Bound</u> Motivation Group	<u>Building Champions</u> <u>Star Bound</u>
Social/Emotional	Peer Connect Group/ <u>Character Lab</u> /Grief and Loss Group	<u>Character Lab</u> /Grief and Loss Group	<u>Character Lab</u> /Grief and Loss Group



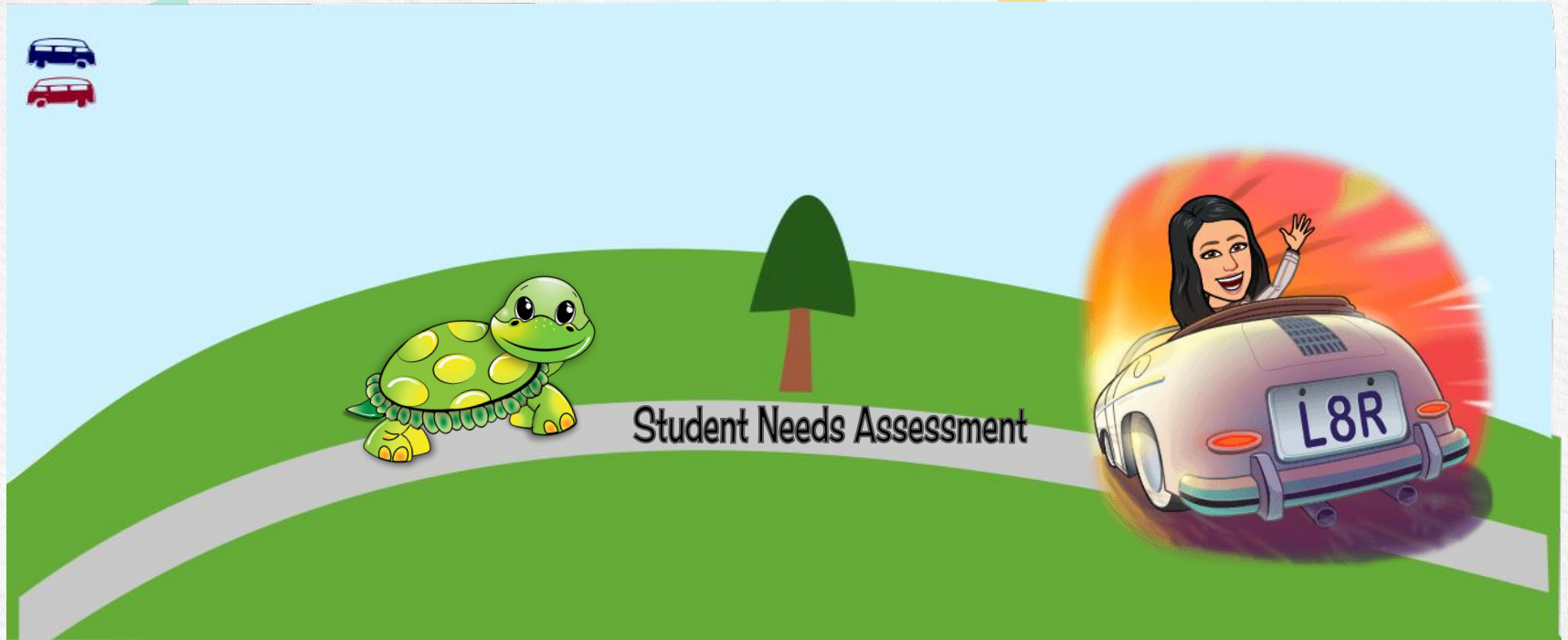
Tier 2 Level Small Group-Outcome Data



Building Champions ~10 Participants



BVMS Program Changes based on Student Needs 21/22 SY





Questions?

